

Hammer-In Drywall Anchors



TECHNICAL INFORMATION WALLCLAW ANCHORS

USE WALLCLAW ANCHORS IN DRYWALL ONLY:

WallClaw Anchors are drywall anchors – a material also known as (drywall, gypsum board, gyp. board, wall board, sheet rock, and green board). Hammer-In WallClaw Anchors, mount fixture with screw and anchor clamps to wall.

Installs in Seconds - easy to install, no drilling, no mess, Hammer-In, Fasten, Clamps to Wall. Easily removed and repaired. One anchor works in both 1/2-inch and 5/8-inch wall.

WallClaw Anchors work in:

- 1/2-inch drywall (including Type-X fire rated wallboard) - Maximum Load Rating 165 lbs.
- 5/8-inch wallboard (including Type-X fire rated wallboard) - Maximum Load Rating 227 lbs.
- Removable and Easy Repair of Small Narrow Slit in Wall once Anchor is Removed

Cautionary Considerations:

- Do not exceed MAXIMUM Load Ratings. Load ratings are only a guide and shown for comparison only.
- Maximum hanging load is based on the fixture mounted being flush to the face of wall.
- Maximum load may vary, based on installation, quality & thickness of drywall, and dimensions of item to hang.
- Maximum thickness of fixture / bracket should not exceed 1/8-inch – or use a longer Type B “blunt tip” screw
- Not tested in or recommended for 3/8-inch wallboard, stucco, plaster, masonry, or concrete.
- Not intended for use in studs, for ceiling applications or for mounting televisions to drywall.
- Not intended for use in studs or structural framing.

ONE ANCHOR: WallClaw Anchor works in both 1/2-inch and 5/8-inch wallboard.
WallClaw Anchors can hang from 5 lbs. to a maximum of 165 lbs. (1/2” wall) – ONE anchor.
No need for multiple load rated anchors or styles – ONE WallClaw Anchor does it all.

ANCHOR SIZE / DIMENSIONS:



Anchor Length:	2.000 inches
Head Diameter:	0.625 inches
Blade Width:	0.625 to 0.250 inches
Thickness of Blade:	0.250 inches (at shaft)
Anchor Weight:	1.3 grams / 0.05 ounces / 0.0031 pounds

ANCHOR MATERIAL:

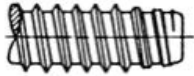
WallClaw Anchors are made from a proprietary blend of nylon based engineered plastics and a proprietary process.

SCREWS:

Screws provided are:

#8 - 18 x 1.25 Type B (Blunt Tip) - ANSI B18.6.4

Made from: 1008 Low Carbon Steel, Cold Formed, Self Tapping Screw designed for use in plastics



Phillips Slot

Pan Head

Hardened Zinc CR+3 (RoHS Compliant / CA Compliant)



Can other screws be used?

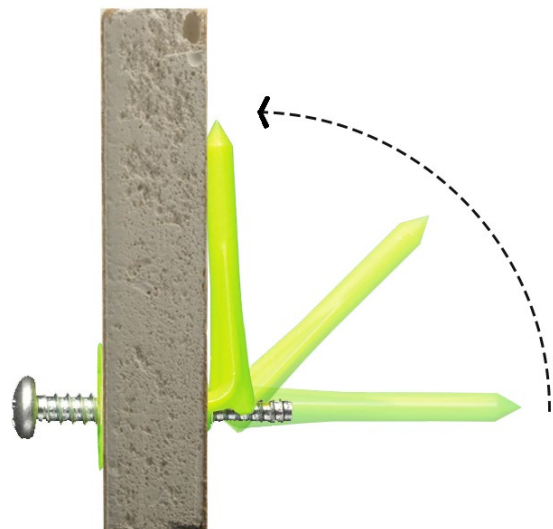
Any **Type B (blunt tip)** screw can be used, including screws longer than the 1.25" long screws provided. The Maximum Loads are based on the 1.25" length screws provided per lab testing, results may vary with longer or different screws. The CAM systems inside the anchor are optimized for performance using a Type B (blunt tip) screw and the anchors tested for Maximum Load Ratings used the Type B (blunt tip) screws provided. If other screws or screw tips are used, the anchor may activate the leg and appear to work, but other screws were not lab tested and results may vary.

INSTALLATION INSTRUCTIONS:

Refer to www.wallclaw.com for a short demo video on how WallClaw Anchors work.



227 LBS. in 5/8" wall



HAMMER-IN | FASTEN | DONE



Find the arrow on the head of anchor (shown on top of WallClaw anchor head).
The arrow on the anchor head should be pointed UP when being installed in the wall.

Hold the anchor like a nail and gently TAP the anchor repeatedly until the head of the anchor is seated flush with the face of the wall.

Do not attempt to “seat” or pound head of anchor into drywall.

As the anchor is installed with the fixture and screw is tightened it will draw the anchor head tight to the wall and clamp the anchor to the wall between the anchor head and anchor leg behind the wall.

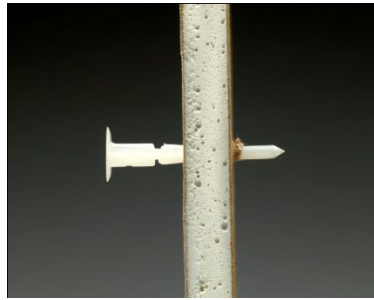
INSTALLATION SEQUENCE:

Be sure:

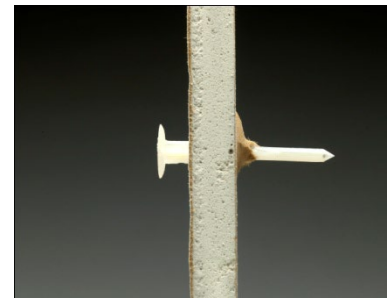
- Be sure the arrow on head of anchor is pointed up.
- Gently and repeatedly tap anchor into wall like a nail.
- Do NOT set or countersink the head of anchor into drywall – this may damage the drywall.
- Use the Type B (Blunt Tip) screws provided to attach fixture or bracket to the wall.



1 - HAMMER ANCHOR IN LIKE NAIL



2 – GENTLY, REPEATEDLY TAP ANCHOR INTO WALL



3 - TAP UNTIL HEAD IS FLUSH



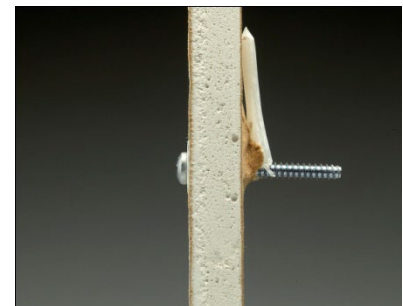
4 – APPLY FIXTURE, INSERT SCREW (PROVIDED)



5 - SCREW LOCKS LEG BEHIND WALL



6 – LEG IS LOCKED BEHIND WALL



7 – TIGHTEN SCREW FIRMLY TO FIXTURE OR LEAVE SCREW EXTENDED FOR PICTURE WIRE



INSTRUCTIONS

FASTENING A FIXTURE / ITEM TO THE WALL:

Maximum recommended thickness of fixture / bracket being mounted on wall should not exceed 1/8-inch thickness based on length of screw provided. If thicker fixture / bracket is to be attached use the specified screw in a longer length that reflects the increased thickness of the thicker fixture / bracket. Do not exceed 1/2-inch fixtures / brackets.

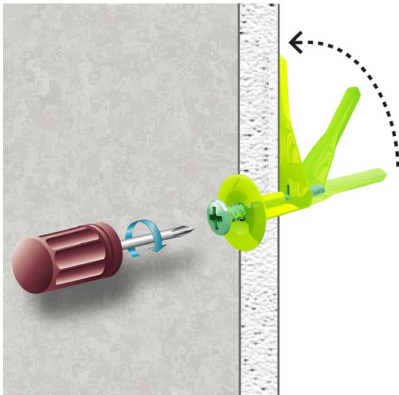
Hanging a Picture – insert screw provided into anchor until screw head is approximately 1/8-inch from the head of the anchor. Installing the screw activates the locking leg of the anchor and secures the anchor to the wall. Since the screw head is extended off the wall by approximately 1/8-inch place wire from picture over screw shaft behind screw head. Check for secure hold.

Hanging a Fixture - insert screw through fixture or bracket and align fixture to be mounted to wall with anchor – insert screw tip into anchor and using a screwdriver turn screw to the right to install fixture to wall and activate WallClaw Anchor to lock to wall.

As screw is inserted into WallClaw Anchor – the nail and wing tip behind the wall bends up between 90-120 degrees behind the wall and secures the anchor to wall.

Screw should be installed sufficiently to activate locking leg of anchor – full length of screw less approximately 1/8-inch or until screw head is seated firmly against fixture.

TIGHTENING THE SCREW:

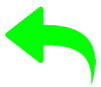


Do NOT over tighten screw as threads secured to inside of anchor may strip.

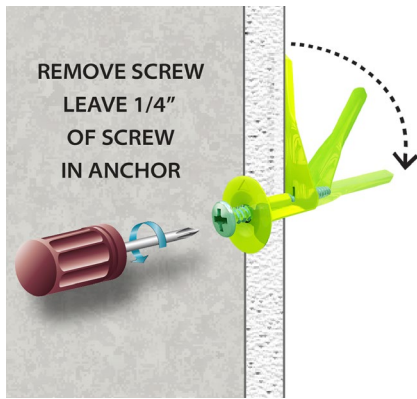
CAUTION: Use of power drills with torque setting set too high may strip screw as well. If this occurs – remove anchor, push new anchor into wall with your thumb or tap into place with hammer in place of the original or damaged anchor and re-install per instructions.

If the screw is stripped accidentally – start to remove the screws leaving approximately 1/4-inch of the screw in the anchor – then using the screw as a handle and wiggle the anchor out of the wall.

Once the anchor is removed from the wall – a new WallClaw Anchor can be inserted into the same hole, unless the drywall was damaged. Simply insert a new anchor (arrow on head of anchor pointing UP) – into the wall using your thumb – when the head of the anchor is flush with the wall – re-insert the screw to re-activate the anchor and lock it to the wall.



EASY TO REMOVE:



- 1 - Remove screw from anchor with screwdriver. As screw is removed from anchor – the locking leg behind the wall relaxes and straightens out.
- 2 - When the screw is almost out of the anchor (leave about 1/4-inch of the screw shaft inside in the anchor) use the screw as a handle and wiggle the anchor free from the wall.

If the screw has been removed completely – re-install the screw about 1/4-inch into the anchor and use the screw as a handle and wiggle the anchor free from the wall.

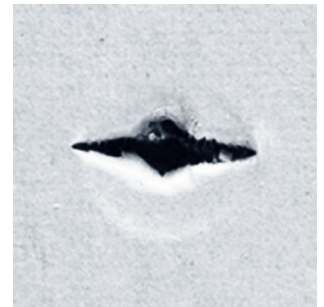
If the screw has been removed from the anchor use your fingers or the claw side of a hammer to get under the head of the anchor and pull it from the wall. If using a claw hammer – gently wiggle the anchor free from the wall to minimize damage to the wall – once the removal of the anchor has started removing the anchor with your fingers should be easier.

Once the anchor is removed from the wall – a NEW WallClaw Anchor may be used in the same hole if the drywall integrity is sound. Simply insert a new anchor (arrow on head of anchor pointing UP) – into the wall using your thumb – when anchor is flush – refer to installation instructions for balance of installation.

WALL REPAIR:

If repair to the anchor hole is necessary – the WallClaw Anchor leaves a small slit in the wall versus the large hole left by many other anchors.

A simple pass of wall Spackle or drywall compound should repair the small slit left from the anchor very easily.



TESTING PROCEDURES:

WallClaw Anchors have been tested at an independent 3rd party construction materials testing laboratory.

Load testing on the WallClaw Anchors was conducted for shear (hanging) and tension (pull out) loads in both 1/2-inch and 5/8-inch wall board. This was done on full wall sections, framed at 16-inches o.c. and assembled with drywall screws using code defined spacing for the screws.

Anchors were installed at the mid-span (weakest point) of the wallboard between studs for testing. Drywall is not a structural material and therefore does not have defined test standards for loads. However, WallClaw Anchors uses an independent third party certified construction materials testing laboratory for load testing using the defined standards for testing of structural anchors as a guide for the test procedures. Sophisticated software, sensors and measurement equipment is utilized by the laboratory along with sensors for any movement of the anchor under load as the movement of an anchor under load terminates the test immediately as the failure point.

Since no standards have been defined by ASTM for testing of drywall anchors, WallClaw Anchors were tested uses ASTM E488, Standard Test Methods for Strength of Anchors in Concrete and Masonry Elements, as a guideline. Lab technicians followed these and their other industry lab standards and procedures for testing the WallClaw Anchors load performance.



LOADS & TESTING:

- The performance of these products is subject to variable conditions.
- Maximum load ratings are shown for comparison only.
- Maximum Load, Ultimate Load and/or Failure load are all the same, it is the point at which an anchor, the screw or the drywall fails. The Maximum Load is an average of between 5 or 10 tests depending on test specifications and standards that define load performance. Since the load is an average, some loads during testing are slightly higher and some are slightly lower, but they must all fall within a fairly tight percentage.
- WallClaw Anchors uses an independent third party certified construction materials testing laboratory for load testing using the defined standards for testing of structural anchors as a guide for the test procedures. The Maximum, Ultimate or Failure Loads for WallClaw Anchors are shown for comparison to competitive anchors using the same Maximum Load Ratings.
- During testing the WallClaw Anchors have not failed to date - the failures have been due to failure of the drywall (which has torn allowing the anchor to move) or due to the failure of the screw (the heads of the screws have been sheared off in some tests), but the WallClaw anchors did not break. Typically the drywall is the source of the failure.

RECOMMENDED LOADS:

Maximum and Recommended loads are provided only as a guide.

Maximum load may vary, based on quality and thickness of drywall, installation, dimensions of object being hung and other factors.

Maximum thickness of fixture being hung on wall should not exceed 1/8-inch - based on the length of the screws provided (1.25-inch long screw) – this will ensure proper activation of anchor. If fixture is thicker than 1/8-inch a longer Type B screw is required.

Not intended for use in studs or for ceiling applications.

WallClaw loads shown are “MAXIMUM LOADS”.



SHEAR (Hanging Load) - These are **MAXIMUM LOADS**.

- hangs up to 165 lbs. in 1/2-inch drywall.
- hangs up to 227 lbs. in 5/8-inch drywall.

RECOMMENDED LOADS

100 lbs. 1/2-inch drywall
135 lbs. in 5/8-inch drywall



TENSION (Pull Out Load) - These are **MAXIMUM LOADS**.

- pull out up to 80 lbs. in 1/2-inch drywall.
- pull out up to 114 lbs. in 5/8-inch drywall.



LIMITED WARRANTY:

These products are sold 'AS IS' without any expressed or implied warranties. WallClaw Anchor's sole liability, if any, shall be to replace this product or refund the purchase price. The performance of these products is subject to variable conditions. Maximum load ratings are shown for comparison only.



CONTACT INFORMATION:

WallClaw Anchors

PO Box 17127

Reno, NV 89511

(775) 525-9595 – Telephone

(775) 525-9394 – Facsimile

sales@wallclaw.com

<http://www.wallclaw.com>

Distribution Center in Sparks, NV 89431

Version Date: 060124